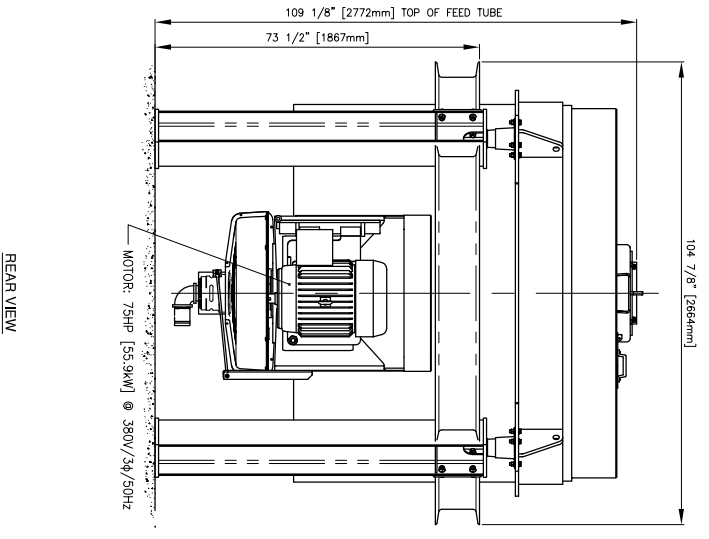
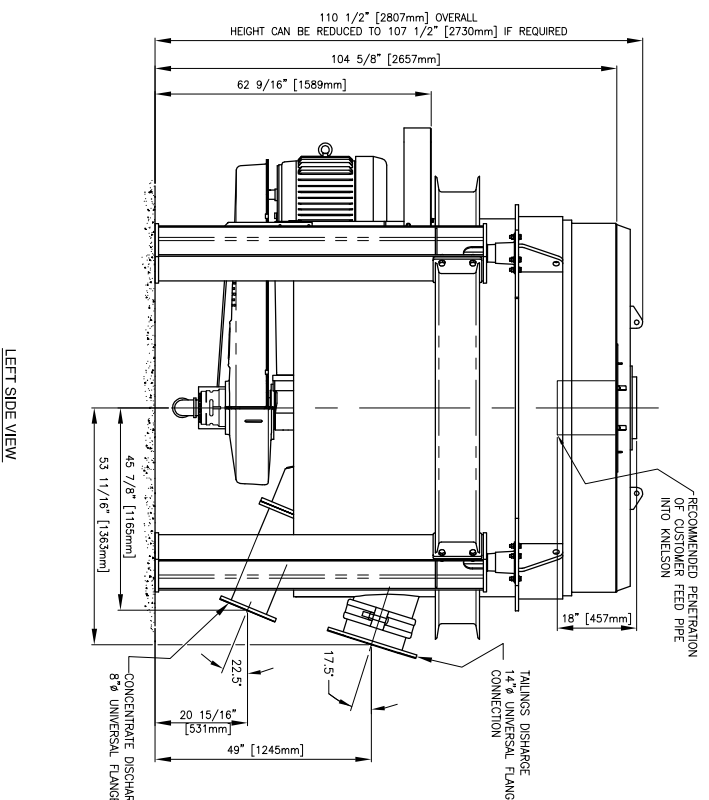


MACHINE FOOTPRINT

NOTE:
 - VFD (NOT SHOWN) TO BE MOUNTED BY CLIENT
 - DYNAMIC BRAKING (NOT SHOWN) TO BE MOUNTED BY CLIENT

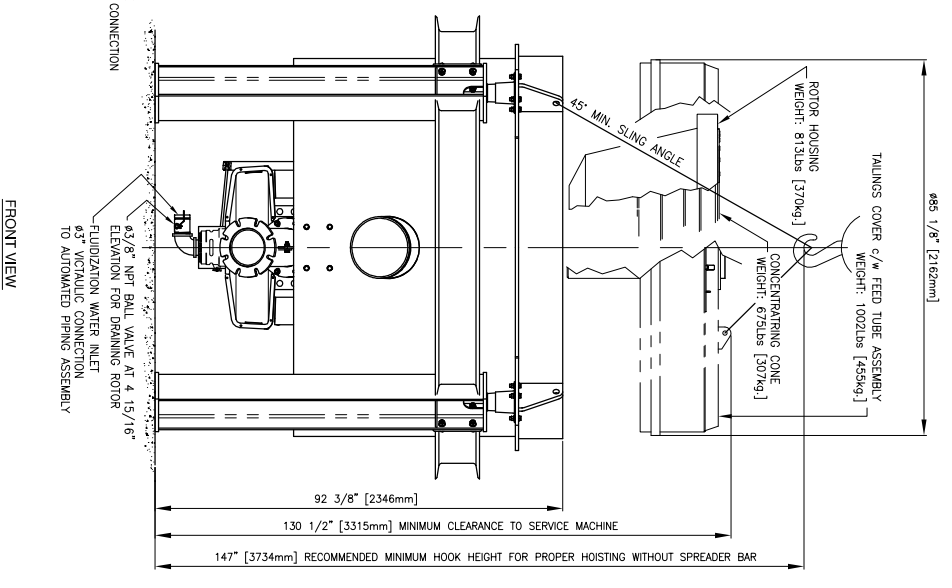


REAR VIEW



PLAN VIEW

LEFT SIDE VIEW

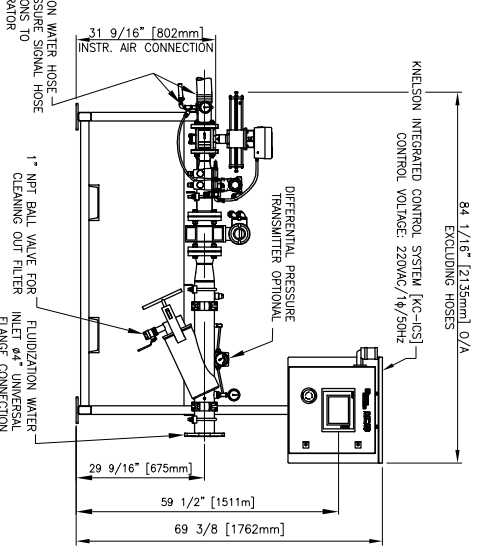
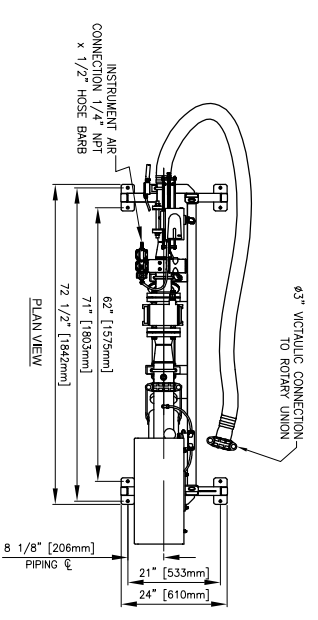


FRONT VIEW

FLSINIGHT KNELSON CERTIFIED

AUTHORIZATION: Ravil Chingolov
 DATE SUBMITTED: 12/11/2013
 CLIENT NAME: Russian Platinum
 PROJECT NAME: Kondyor Project
 PROJECT NO: TBA
 PO/CONTRACT NO: -
 EQUIPMENT NO: KCS48-1409 - KCS48-1414

NOTE	DESCRIPTION	IMPERIAL	METRIC
1.	DRY WEIGHT OF CONCENTRATOR (FOR INSTALLATION)	11,500 lbs.	5220 kg.
2.	OPERATING WEIGHT OF CONCENTRATOR	12,750 lbs.	5780 kg.
3.	APPROX. WEIGHT OF FREESTANDING PIPING ASSEMBLY	600 lbs.	270 kg.
4.*	MAXIMUM WEIGHT UNDER SANDED CONDITION BASED ON SOLID S.G. OF 2.7 (STATIC LOAD)	25,000 lbs.	11340 kg.
5.*	MAXIMUM OPERATING LOAD AT EACH OF THE FOUR MOUNTING POINTS.	5000 ± 400 lbs.	2270 ± 180 kg.
6.	FOUR M24 ANCHOR BOLTS REQUIRED TO INSTALL UNIT	TORQUE: 200 ft.-lbs.	TORQUE: 270 Nm.
7.*	SHEAR (HORIZONTAL) LOADS AT MOUNTING POINTS	± 400 lbs.	± 180 kg.
8.*	ROTOR SPEED (60G - 120G) (FREQUENCY OF FLUCTUATING LOADS)	315 RPM - 480 RPM	
9.	ALL PIPING TO CONCENTRATOR FEED INLET, TAILINGS AND CONCENTRATE DISCHARGE PIPES SHOULD BE FLEXIBLE TO ALLOW FOR PROPER OSCILLATION OF UNIT'S UPPER FRAME.		
10.	LOADS ARE NON FACTORED AND ARE TO BE USED AS ACTUAL LOADS (CUSTOMER SHOULD REFER TO DESIGN CODE OR SPECIFICATION RELEVANT TO PARTICULAR PROJECT TO SELECT PROPER LOAD FACTORS AND/OR SAFETY FACTORS FOR FOUNDATION/STRUCTURE DESIGN)		



FRONT VIEW
 FREESTANDING PIPING
 NTS

NOTES:
 - FLUIDIZATION HOSE: 25' (7.6m) SUPPLIED
 - PROXIMITY SENSOR CABLE: 32' (10m) SUPPLIED
 - MAXIMUM RECOMMENDED DISTANCE OF REMOTE PIPING FROM CONCENTRATOR: 10' (3m)
 - CONCENTRATOR AND PIPING TO BE MOUNTED AT SAME ELEVATION

NO.	DATE	DESCRIPTION	BY	CHKD.
1	12/11/2013	RELEASED FOR APPROVAL	M. JAMES	

Scale: NTS
 Kondyor Project
 KSCCXXXX

FLSINIGHT KNELSON SLES G.A.
 C/W Remote Automated Piping, G6 Cone, ICS, VFD & Dynamic Braking
 KCS48

Weight: _____
 Based on: _____
 Rechecked by: _____
 Sheet 1 of 1

NO.: 07179-01
 Rev.: 1.00